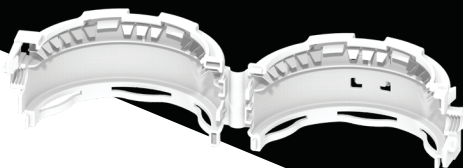
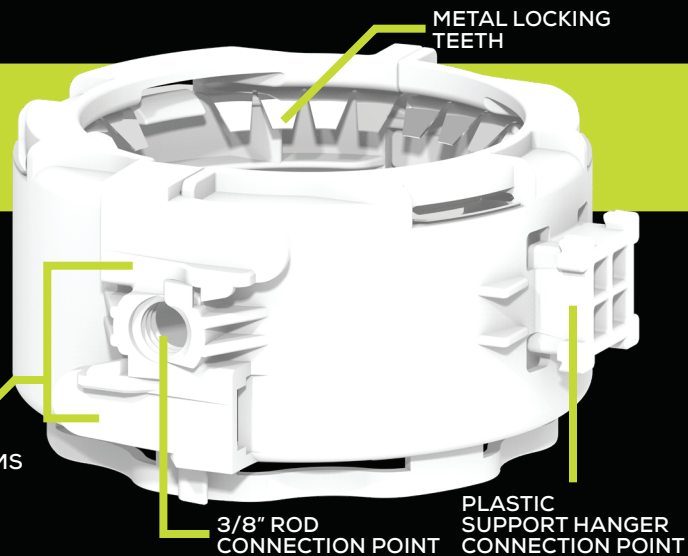


NEW OCTO CLAMP WITH HANGER



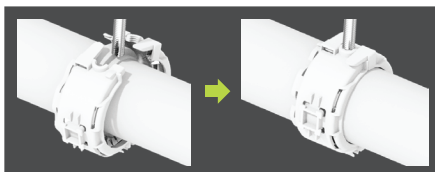
CLICKING ARMS



		
ILSCC02	ILSCC03	ILSCCH
2" (60)	3" (80)	

Introducing the InnoFlue Lite Octo Clamp.

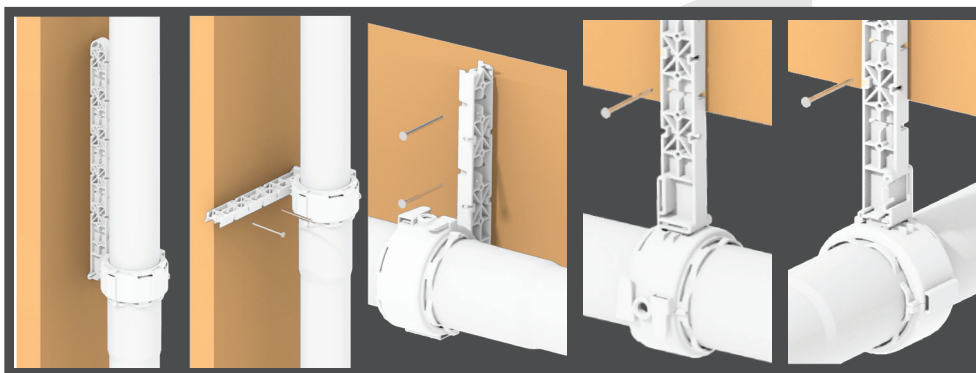
This new item is engineered to provide enhanced support on all pipe fitting connections. Its robust design improves rigidity and connection strength while speeding up installation. The Octo Clamp has a 3/8" threaded rod to support the weight of the vent system.



- Accepts a 3/8" threaded rod.
- Threaded or snapped in place.



- Clamshell clamp allows for **removal and reapplication**.
- **Faster and improved** installation process.



- Hangers can **snap together for increased length!**
- Can be installed: **Vertical | Horizontal | Perpendicular | Parallel**